

Explanation of CMP-10 Setup Tool

1. Preparation

Please connect CMP-10 to PC by serial cable.

Please make sure which serial port is used for the serial cable.

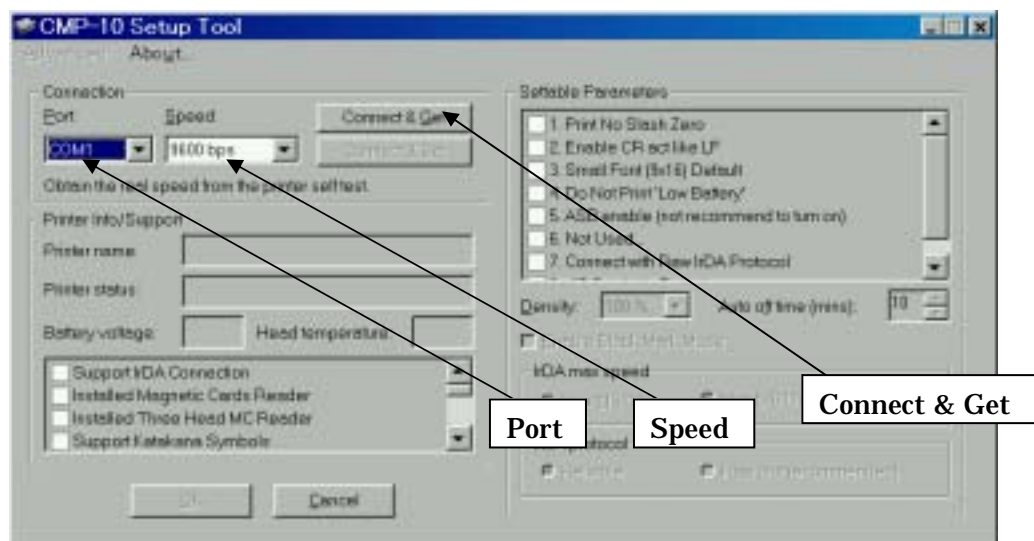
Please check baud rate of CMP-10 by self-test.

2. Explanation of screen

When CMP-10 Setup Tool starts, following window will show up.

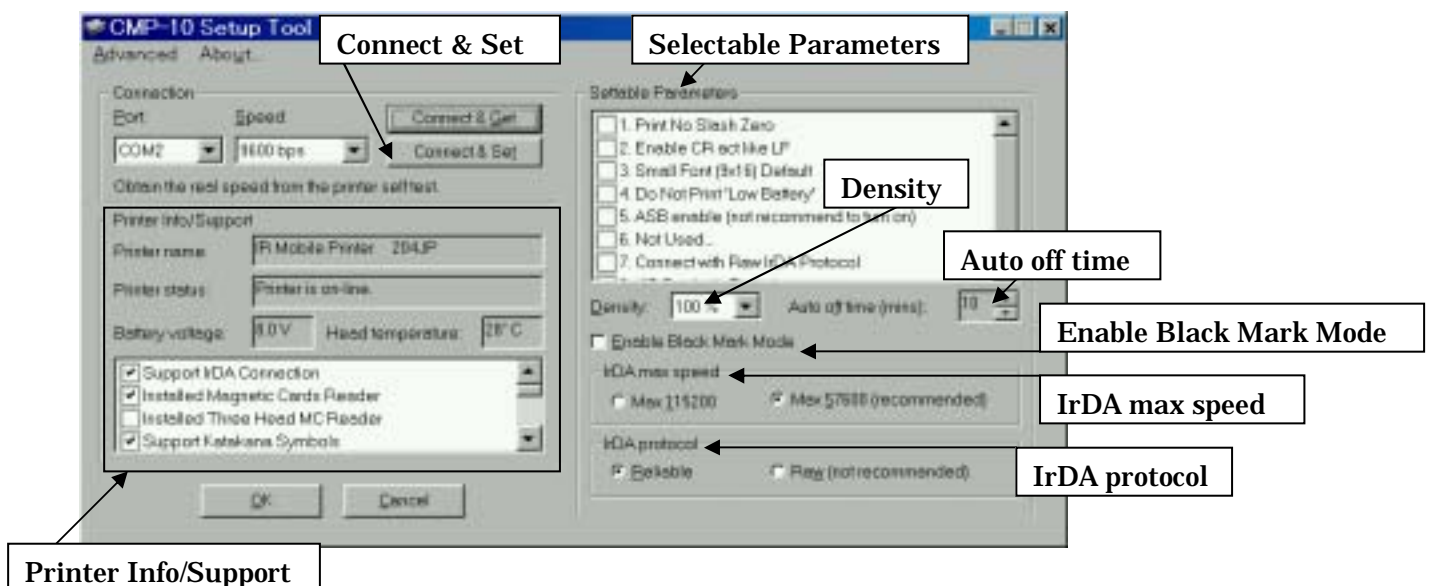
Please set "Port" and "Speed" for the serial port number and baud rate

And please press [Connect & Get].



Then current setting is loaded from CMP-10 the screen and window is changed like below.

Make necessary change here and press [Connect & Set]. Then changed values are set on CMP-10.



* “Printer Info/Support” shows current setting values and supported function.

User cannot change these values.

* Right half is user changeable values.

* “Selectable Parameters” is memory switches. By selecting/deselecting items, function is changed.

* “Density” is darkness of printed results.

* “Auto off time” is to set the auto power off time.

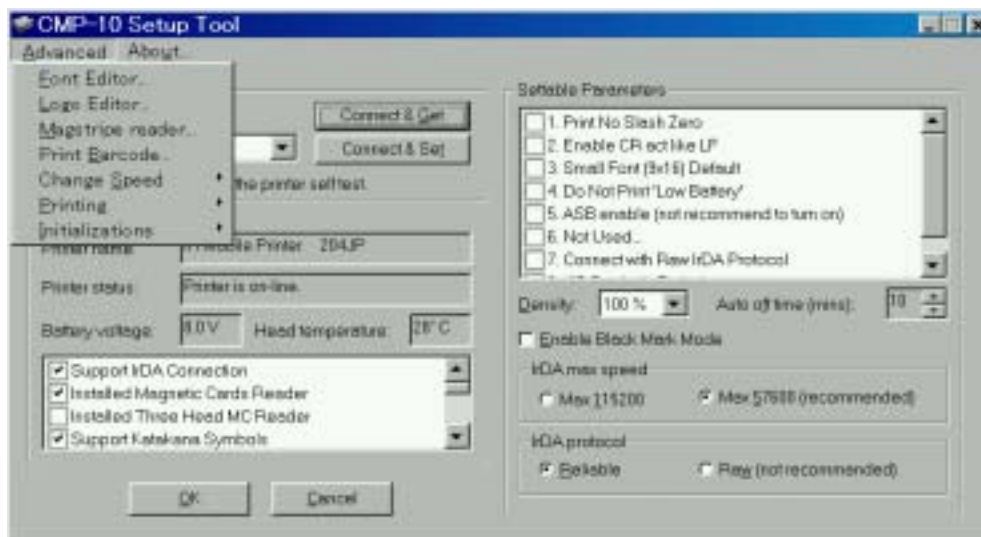
* By selecting “Enable Black Mark Mode”, black mark function becomes enabled.

* “IrDA max speed” is the maximum data transmission speed by IrDA. There is some chance to miss print data with 115200. So usually it is recommended to set for 57600.

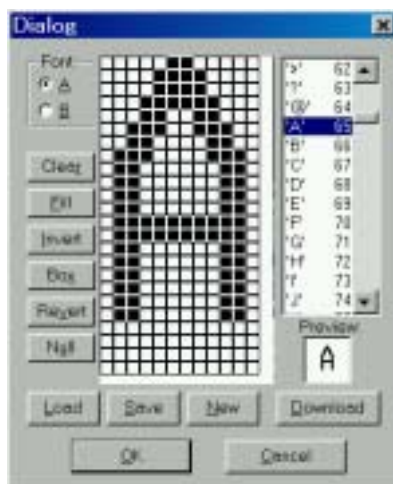
* On “IrDA protocol”, if “Raw” is selected, CMP-10 does not use IrDA protocol. This may be convenient for special infrared communication.

3. Explanation of menu

On the “Advanced” menu, you can easily use function of CMP-10 or change CMP-10 setting.

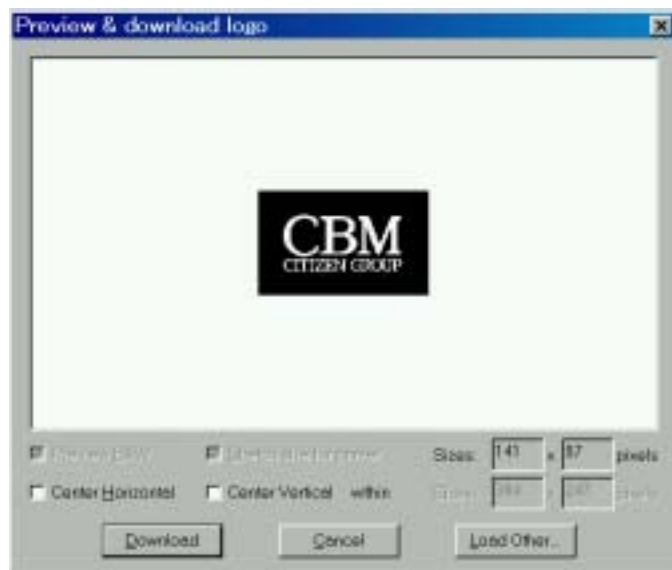


3-1. Font Editor



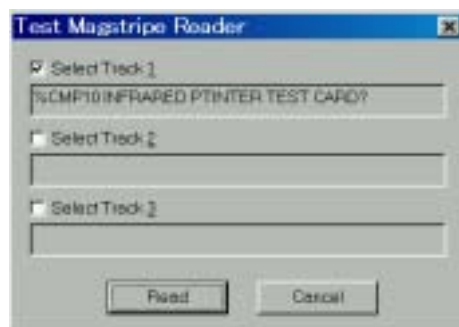
By this window, user can design characters and load it to CMP-10.

3-2. Logo Editor



BMP、JPEG、GIF、ICO ファイル形式のロゴ(グラフィック)データを読み込んで、CMP-10 に登録できます。

3-3. Magstripe reader



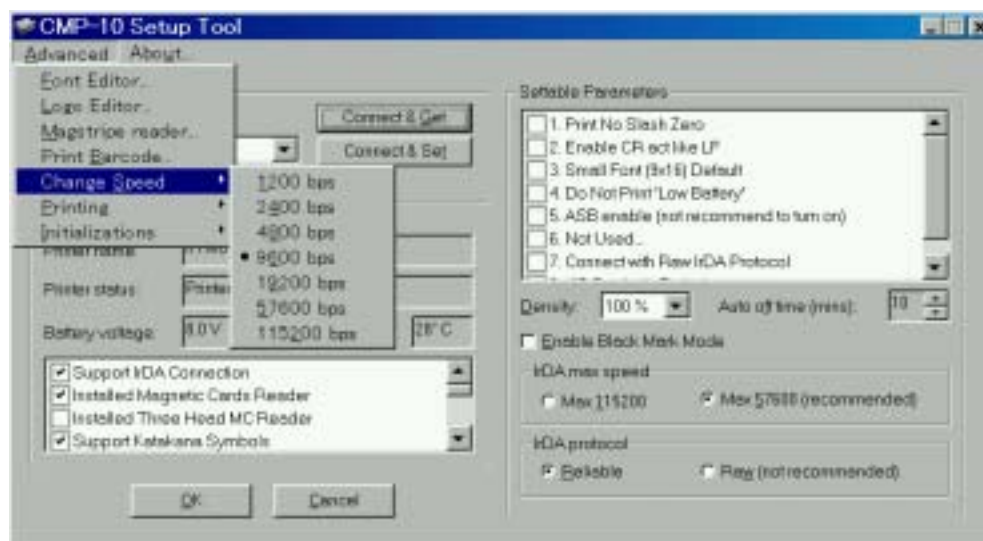
For the CMP-10 with magstripe reader, it is possible to read the data from specified track of magstripe card.

3-4. Print Barcode



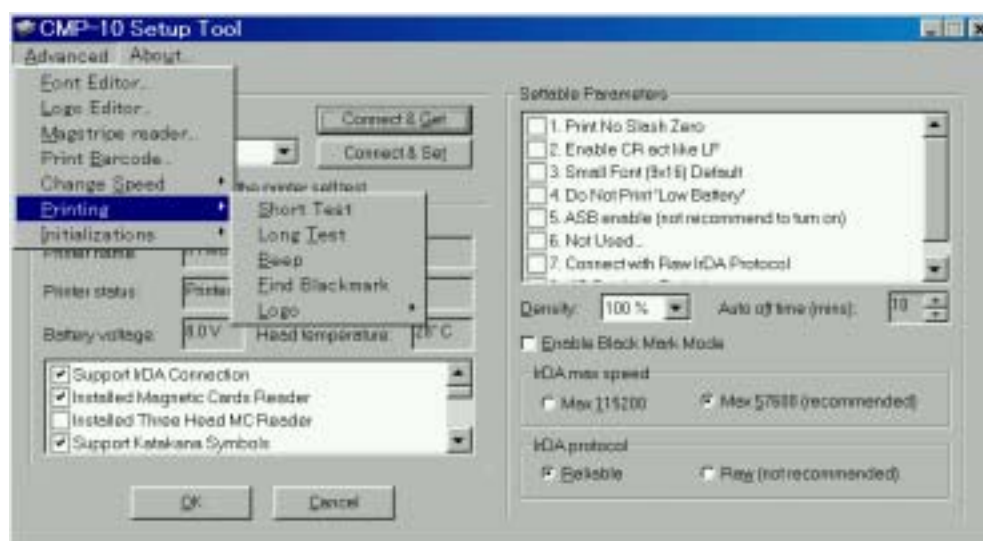
From this window, it is possible to print barcode with specified data.

3-5. Change Speed

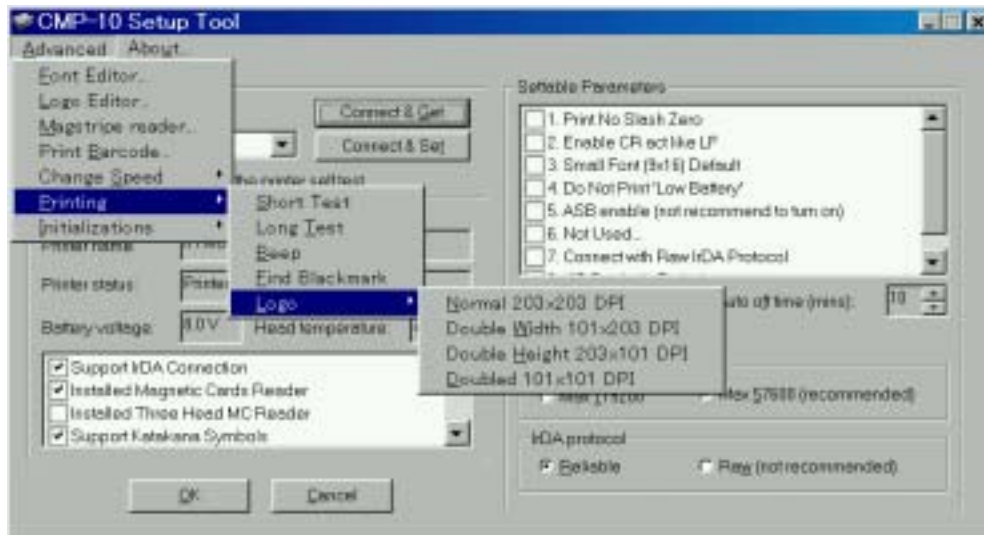


It is possible to change baud rate of CMP-10. After the change, the software automatically start communicating with new baud rate.

3-6. Printing

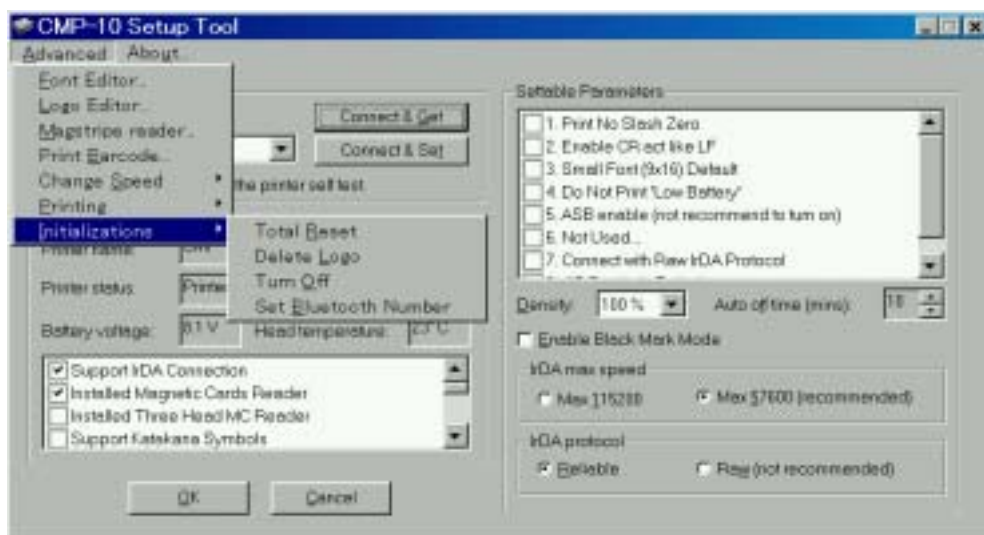


Functions such as Short test, Long test, beeping, finding black mark are supported here.



Printing logo data and its resolution can be specified.

3-7. Initialization



Initializing CMP-10 is for the function such as deleting logo data, turning CMP-10 off.



Address can be changed for BlueTooth model.