

---

## UMD Hosted Software Services

---

**Track and trace solutions** are best offloaded from Corporate Enterprise systems for a variety of reasons:

- reduced project complexity required in modification of ERP systems
- performance and reliability centred around automating work routines
- security of data access, permissions and adherence to policies
- work automation projects generally involve multiple companies
- data capture and mobile device management requirements
- ability to achieve lower cost and faster implementation

**With more than 20 years of experience in this market**, UMD Solutions Group is bringing a new way to achieve project success to market to assist companies to tackle process improvement projects that in the past have been simply too hard.

Tough times now require improved visibility, accuracy and productivity of day to day work routines and processes that data collect and automation can achieve.

UMD will make enable organisations to do proof of concept projects and trials without heavy investment of resources or time.

Achieving successful outcomes for issues that affect costs will encourage and motivate companies to tackle more. Our platform approach will help you enhance and grow your capabilities in line with your priorities and the real world abilities of your work teams.

The nature of work projects involve multiple companies - therefore a specialised managed and hosted software service provides the foundation for secure information sharing and access that the work force needs.

**We understand and concentrate on the usability and satisfaction of the users!**

- keep it as simple as possible
- automate data capture and intelligence where possible
- lower costs and eliminate waste and productivity gaps
- give you control over the scope and functionality required.

**Cost advantage: our solutions give you a monthly service cost in line with the functionality that you select and use.**

Unique Micro Design Pty Ltd (A.B.N. 29-007-419-490) Tel: +61-3-9582-7000

200 Wellington Road, Clayton VIC 3168 Australia Fax: +61-3-9582-7001

[www.umd.com.au](http://www.umd.com.au) [sales@umd.com.au](mailto:sales@umd.com.au)

## **Track and Trace Solution Set**

Software application functionality based upon functional modules. We work with you to specify and design a system that aligns with your priorities.

**Our goal: quick and reliable delivery to get process improvement working.**

**MMP** forms the basis of an integrated, real-time intelligent business mobility system. UMD uses the MMP foundation modules to quickly prototype your specific Mobile Data application with a toolkit of existing screens that are used to mould your required work process information into the MMP communications infrastructure.

**AMP** is our asset management platform. This hosted software service is easily tailored to offer you flexible asset descriptions and mapping with your activity flow. Definition of your business processes is done in a non technical fashion that enables us to map your requirements using our tools, tables and engine.

With our industry experience we apply identification standards to all types of track and trace requirements.

We leverage the broadest range of local and overseas hardware supplier relationships to select the appropriate fit to your needs. Where you want to start with a low cost, simple solution we can make it happen. Where you are adding to an existing capability, we can offer advanced products and technologies.

## **Hardware Portfolio (for more details see [www.umd.com.au](http://www.umd.com.au))**

Printers and intelligent labelling options

The broadest range of RFID tags and readers in Australia

Desktop data collection

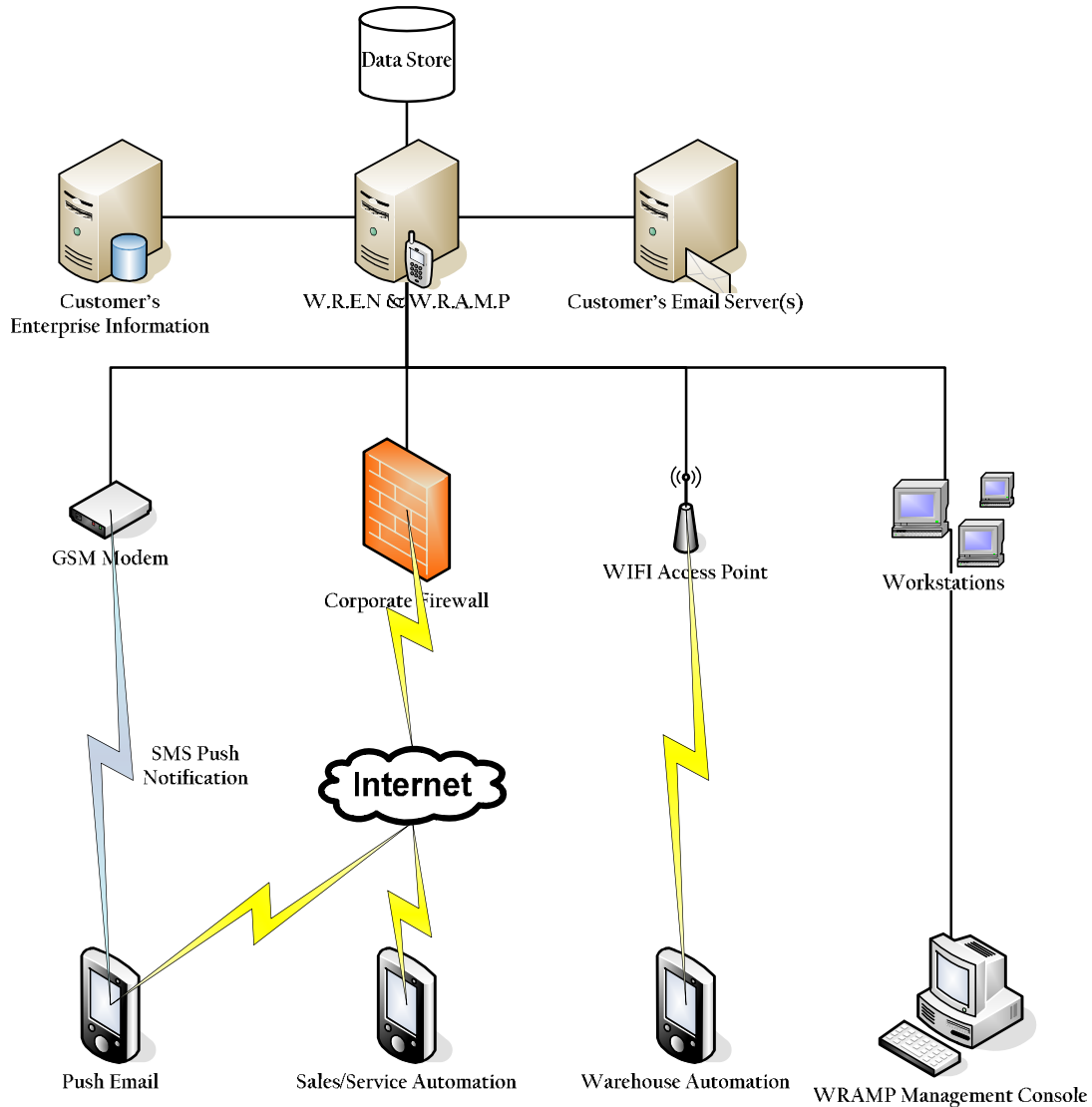
Work Process terminals and kiosks

Mobile Terminals from smart phones through to specialised devices

Tablet, forklift and rugged laptop computers

Customised hardware and all types of cradles and peripherals

Wireless Networks from short range to solutions for any type of site



**WREN/WRAMP System Architecture**

## Added value in our hosted software service

Wireless Real-time mobile applications is our business - MMP lies at the heart of UMD's sophisticated hosted mobility service solutions. MMP is communications software that combines a number of proven development tools to deliver rapidly deployed, mobility business applications. It contains a number of platform business modules that integrate a business's existing corporate information (encompassing corporate e-mail & SMS Messaging) into one cohesive and always available mobility server.




Using MMP as the basis of a comprehensive messaging & mobile data management solution, existing core business systems can be extended to remote workers in the field via a variety of communications options – simple cradle synchronisation, WiFi real time private LANs or wide area GPRS, 1XRTT or CDMA for on the road data collection.

MMP is also open and scalable allowing new business applications to be deployed quickly and cost effectively. The server console is designed to manage the communication of data from your core business systems to Mobile workers by providing a reliable and scalable infrastructure together with flexible database management and personalized services for real time priority messaging.

## Data Security and Management

In recent years, the proliferation of laptop computers and PDA's has caused an increase in the range of places people perform computing. At the same time, network connectivity is becoming an increasingly integral part of computing environments. As a result, wireless networks of various kinds have gained much popularity. But with the added convenience of wireless access come a new perception of possible threats to the core network, not the least of which are heightened security concerns. When transmissions are broadcast over radio waves, interception and masquerading becomes trivial and so there is a need to employ additional mechanisms to protect the communications.

MMP enforces three main security goals:

-  **Confidentiality**      The fundamental goal is to prevent eavesdropping.
-  **Access Control**      To protect access to a wireless infrastructure.
-  **Data Integrity** A related goal is to prevent tampering with transmitted messages.

To ensure reliable performance and overall system management, MMP gives you tools for complete visibility and diagnostics for all types of users. This is particularly difficult in most solutions where mobile workers and processes are not able to be managed. The result with MMP is confidence in the integrity of the data.

## **MMP Console**

MMP Console is a high performance tool for MMP server administration and operations. Console enables an integrated environment that provides a single, consistent and visually rich interface to all MMP foundation modules. It offers many powerful features for both experienced users and beginners alike. The new and exciting state of the art graphical user interface (GUI) provides rapid management of mobile data based on your specific business applications and navigation throughout the system.

The MMP Server is sold as a Managed Service with low cost monthly fees established specifically for the functions that you use. As your needs grow, MMP can add functionality quickly and easily without impacting users or changing your overall architecture. The MMP hosted service can support many hundreds of connected mobility users.

### **Key features:**

- ✚ Customisable interface to give you the visibility you want
- ✚ Sophisticated scripting language enabling easy host interfacing;
- ✚ Powerful security management;
- ✚ Secure session with fully encrypted data transmissions via 1024 and 2048 bit digital certificates;
- ✚ Real-time and consistent views of all your data across your organisation;
- ✚ Message sending and notification for private work group communications between user groups;
- ✚ Multiple, simultaneous views of modules and data;
- ✚ Intelligent error reporting and logging;
- ✚ Print and print preview your reports and work;
- ✚ View and modify reports;
- ✚ Send individual or broadcast SMS to users;
- ✚ View real-time activities and jobs from your mobile work-force;
- ✚ Interchange data between modules and users;
- ✚ Automatic data synchronisation amongst users and views.

### **Summary**

UMD hosted software provides companies a quick start, low cost and low risk platform that enables you to implement work process improvement. You build your competence and disciplines in a phased approach that delivers user confidence and supports the real world situations and environments that you want to automate.

Specialised support for data capture and tracking applications to help you achieve your business goals without requiring significant investment in resources, time or effort.